

# Retta Louise Sigvardt

Openness factor 3%  
Yarn-dyed screen textile



**kvadrat**

## Specification details

Openness factor	3%
Composition	100% polyester
Fabric width	Max. 280 cm (110 inches)
Weight	250 g/m <sup>2</sup>
Thickness	0.44 mm
IR emissivity	0.84
Light fastness	6-7 (ISO105-B02)
Fire tests	BS 5867 part 2 type B, DIN 4102 B1, IMO FTP code 2010: part 7, NF P 92 507 M1, NFPA 701
Environment	GREENGUARD Gold, STANDARD 100 Class IV by OEKO-TEX®, Health Product Declaration (HPD). Comply with REACH and RoHS2. Halogen free, Phthalate free, Formaldehyde free, Antimicrobials free, PVC free.

## Technical details

Colour	Optical properties acc. to EN 14500:2021 and EN 14501:2021					
	Rs (%)	Ts (%)	Tv (%)	Tuv (%)	Ra	Glare control rating
111	54	40	39	18	97	0
131	38	26	23	11	92	1
141	28	19	16	6	98	1
161	15	10	9	6	98	2
191	26*	21	3	4	98	3
221	48	32	30	9	88	0
431	43	29	25	7	78	0
531	35	24	15	6	66	1

Colour	Solar control double glazing G			Solar control triple glazing I		
	gtot/SHGC (%)	Utot-value (W/m <sup>2</sup> K)	Tv, tot (%)	gtot/SHGC (%)	Utot-value (W/m <sup>2</sup> K)	Tv, tot (%)
111	18	0.83	32	18	0.55	30
131	22	0.83	18	23	0.55	17
141	25	0.83	12	24	0.55	11
161	27	0.83	7	27	0.55	6
191	29	0.83	2	28	0.55	2
221	21	0.83	23	21	0.55	22
431	22	0.83	20	22	0.55	18
531	25	0.83	11	24	0.55	10

**Rs:** Solar reflection | **Ts:** Solar transmission | **As:** Solar absorption calculation:  $100 - R_s - T_s = A_s$

**Tv:** Visual light transmission | **Tuv:** UV transmission | **Ra:** Colour rendering index

**Glazing G:**  $g=33\%$  /  $U=1.0$  /  $Tv=70\%$  (acc. to EN14501: 2021) | **Glazing I:**  $g=31\%$  /  $U=0.6$  /  $Tv=64\%$  (with ref. panes acc. to EN 14501:2021)

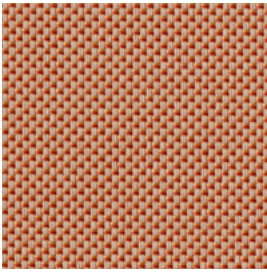
**gtot/SHGC:** Solar heat gain through total fenestration | **Utot:** Thermal heat loss (or gain) through total fenestration

**Tv, tot:** Total light transmission through total fenestration

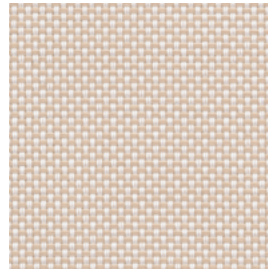
\*Colour 191 is a so called 'cool black', due to the used dye pigments. The relatively high reflectance indicates this.

These are approximate values. Individual results may vary slightly. The technical data are based on average data and are subject to production tolerances. Subject to misprints, errors and technical modifications.

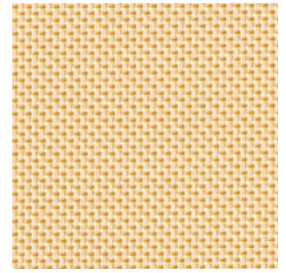
# Retta



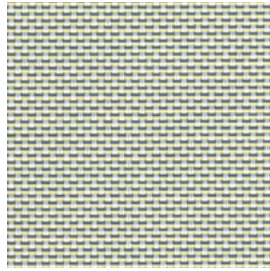
531



221



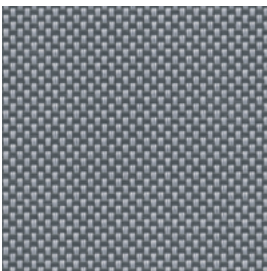
431



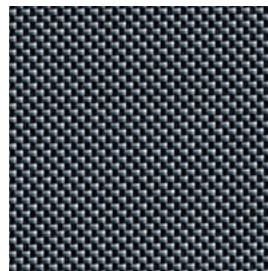
131



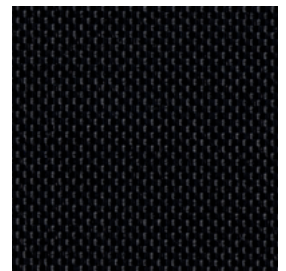
111



141



161



191



## Retta

Design: Louise Sigvardt

DK

**Anvendelse** Rullegardin.

**Beskrivelse** 100% polyester. Bredde max. 280 cm. Vægt 250 g/m<sup>2</sup>. Tykkelse 0.44 mm. Garnfarvet. Nuanceforskel kan forekomme.

**Lysægtighed** 6-7 (ISO 105-B02).

**Flammesikring** BS 5867 part 2 type B, DIN 4102 B1, IMO FTP code 2010: part 7, NF P 92 507 M1, NFPA 701 (Kopi af testrapport kan rekvireres).

**Vedligeholdelse** Se ISO symboler. Kan rengøres med en fjerkost eller en støvsuger med børste på lav effekt. Ved kraftigere tilsmudsning anbefales det at kontakte et professionelt renseri.

UK

**Application** Roller blind.

**Description** 100% polyester. Width max. 280 cm (110 inches). Weight 250 g/m<sup>2</sup>. Thickness 0.44 mm. Yarn dyed. Colour differences may occur.

**Lightfastness** 6-7 (ISO 105-B02)

**Flame resistance** BS 5867 part 2 type B, DIN 4102 B1, IMO FTP code 2010: part 7, NF P 92 507 M1, NFPA 701 (Copy of test report available).

**Care** See ISO symbols. Can be cleaned using a feather duster or a vacuum cleaner with brush nozzle on reduced suction power. In case of considerable staining, we recommend contacting a professional dry cleaner.

DE

**Anwendungsbereich** Rollos.

**Beschreibung** 100% Polyester. Breite max. 280 cm. Gewicht 250 g/m<sup>2</sup>. Dicke 0.44 mm. Garngefärbt. Farbunterschiede können vorkommen.

**Lichtechtheit** 6-7 (ISO 105-B02)

**Flammschutz** BS 5867 part 2 type B, DIN 4102 B1, IMO FTP code 2010: part 7, NF P 92 507 M1, NFPA 701 (Testbericht verfügbar).

**Pflege** Siehe ISO Pflegesymbole. Kann gereinigt werden mit einem Staubwedel oder einen Staubsauger mit Bürstenaufsatz bei niedriger Leistung. Bei starker Verschmutzung empfehlen wir einen professionellen Reinigungsdienst.

NL

**Toepassing** Rolgordijn.

**Omschrijving** 100% polyester. Breedte max. 280 cm. Gewicht 250 g/m<sup>2</sup>. Dikte 0.44 mm. Garengeverfd. Kleurverschillen kunnen optreden.

**Lichtechtheid** 6-7 (ISO 105-B02)

**Brandwerendheid** BS 5867 part 2 type B, DIN 4102 B1, IMO FTP code 2010: part 7, NF P 92 507 M1, NFPA 701 (Op aanvraag sturen wij u graag een kopie van het testrapport).

**Onderhoud** Zie de ISO symbolen. Kan schoongemaakt worden door middel van een borstel of een stofzuiger met borstelstuk op lage kracht. In het geval van serieuze vlekvorming, raden we aan contact op te nemen met een professionele reiniger.

FR

**Domaine d'utilisation** Store.

**Description** 100% polyester. Largeur max. 280 cm. Poids 250 g/m<sup>2</sup>. Épaisseur 0.44 mm. Teinture sur fil. Ecart des coloris possibles.

**Résistance à la lumière** 6-7 (ISO 105-B02)

**Normes au feu** BS 5867 part 2 type B, DIN 4102 B1, IMO FTP code 2010: part 7, NF P 92 507 M1, NFPA 701 (La copie du compte rendu des tests est disponible sur demande).

**Entretien** Voir les symboles ISO. Peut être nettoyé à l'aide d'un plumeau ou d'un aspirateur avec brosse à faible puissance. Dans le cas où le tissu a été fortement taché, nous suggérons de contacter un pressing professionnel.

IT

**Destinazione d'uso** Tende a rullo.

**Caratteristiche** 100% poliestere. Altezza max. 280 cm. Peso 250 g/m<sup>2</sup>. Spessore 0.44 mm. Tinto in filo. Possibili differenze per colore.

**Resistenza alla luce** 6-7 (ISO 105-B02)

**Ignifugazione** BS 5867 part 2 type B, DIN 4102 B1, IMO FTP code 2010: part 7, NF P 92 507 M1, NFPA 701 (Disponibile copia del test).

**Manutenzione** Per favore seguire simboli ISO. Si può pulire con un piumino o un aspirapolvere con spazzola a bassa potenza. In caso di macchie considerevoli, si consiglia di contattare un lavasecco professionale.

ES

**Aplicación** Estor.

**Descripción** 100% poliéster. Anchura max. 280 cm. Peso 250 g/m<sup>2</sup>. Grosor 0.44 mm. Teñido en hilo. Posibles variaciones de color.

**Resistencia a la luz** 6-7 (ISO 105-B02)

**Resistencia al fuego** BS 5867 part 2 type B, DIN 4102 B1, IMO FTP code 2010: part 7, NF P 92 507 M1, NFPA 701 (Copia del informe de ensayos disponible).

**Limpieza** Consulte los símbolos ISO. Puede limpiarse con un plumero o una aspiradora con pieza de cepillo a baja potencia. En caso de manchas considerables, recomendamos contactar con un profesional de limpieza.

SE

**Användning** Rullgardin.

**Beskrivning** 100% polyester. Aluminiumbaksida. Bredd max. 280 cm. Vikt 250 g/m<sup>2</sup>. Tjocklek 0.44 mm. Garnfärgad. Viss nyansskillnad kan förekomma.

**Ljushärdighet** 6-7 (ISO 105-B02)

**Flammskydd** BS 5867 part 2 type B, DIN 4102 B1, IMO FTP code 2010: part 7, NF P 92 507 M1, NFPA 701 (Kopia av testrapport finns tillgänglig vid förfrågan).

**Underhåll** Se ISO symboler. Kan rengöras med en fjäderdammsugare eller en dammsugare med borststycke vid låg effekt. I händelse av fläckar rekommenderar vi att du lämnar in rullgardinen till kemtvätt.

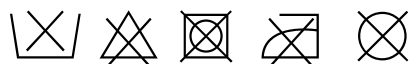
ZH

产品应用 遮光卷帘。

产品详情 100% 聚酯纤维。幅宽：最宽280厘米。克重：250 克/平方米。厚度：0.44毫米。色织。可能出现色差。

日晒色牢度：6-7。(ISO 105- B02)。

阻燃性 BS 5867 第 2 部分 B 型、DIN 4102 B1、IMO FTP 代码 2010：第 7 部分、NF P 92 507 M1、NFPA 701 (可提供测试报告副本)。保养须知 请参照ISO标识。可以使用刷子或配备刷头的低功率吸尘器进行清洁。如脏污较严重，建议联系专业干洗服务。



Contact and further information kvadrat.dk



STANDARD  
100  
15.HNL.57853  
Hohenstein HTTI



5 year  
warranty

**Louise Sigvardt**

Louise Sigvardt is a graduate of the acclaimed Kolding Design School in Denmark where she studied fashion design. Sigvardt's design process begins with a story, a feeling, place, or a graphic expression. She then evolves and translates these into patterns and colours and, finally, a finished design.

**Retta**

Retta by Louise Sigvardt is a woven, yarn-dyed textile made from up to 3 differently coloured yarns. The screen textile has a rich and very natural expression. The composition of coloured yarns gives a deep and interesting colour appearance both from far and close by. Retta is also available in a metallised version, Silvretta.